






11581 Princes Highway Quaama NSW

3  2  6 

This stunning 9-acre property beautifully blends original charm with modern elegance. The new extension offers a stylish retreat, complemented by breath taking views of Mumbulla Mountain, especially during sunset. Enjoy the expansive undercover deck, perfect for outdoor dining, morning coffee, or entertaining friends and family.

Inside, the country-style kitchen exudes warmth and features lovely French doors leading to the charming original veranda. The spacious three bedrooms include a main bedroom with large built-in robes and an en-suite that reflects the property's high-quality finish. With two living areas and a formal dining space, there's plenty of room for everyone to relax, and the wood-fire heater ensures cosy winter nights.

[For full version visit the website](https://www.butterfieldproperty.com.au)

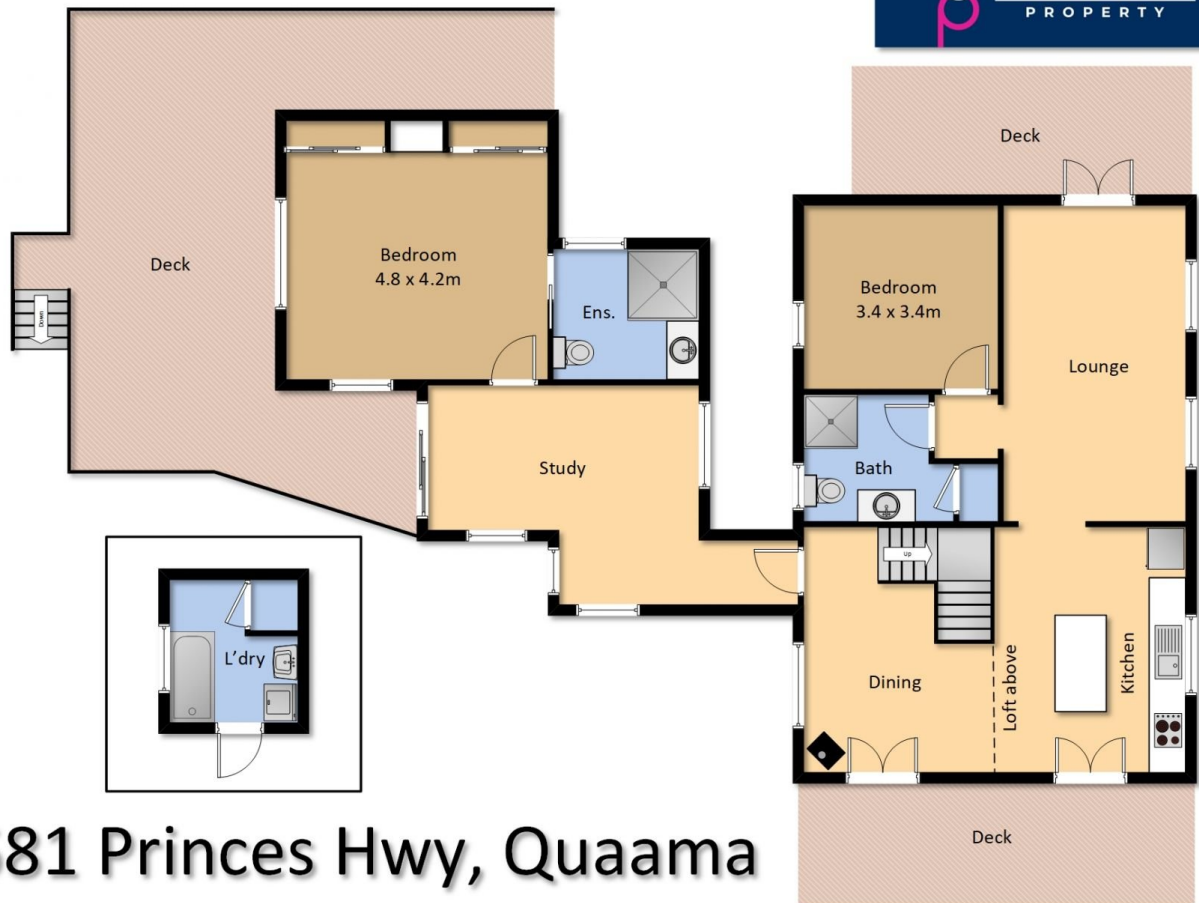
Type : House
Price : \$1,350,000
Land Size : 9.4 Acres
View : <https://www.butterfieldproperty.com.au/sale/nsw/far-south-coast/quaama/residential/house/8158974>



Elvi Di Donato
02 6492 5155



Roy Van Casteren
02 6492 5155



11581 Princes Hwy, Quaama

Measurements are approximate and should be used as a guide only.