



2 Miners Close Bega NSW

3  1 

Introducing 2 Miners Close, Bega a distinctive property nestled on 2 plus acres just North of Bega offering the best of both worlds.

This exceptional property unveils a myriad of possibilities. Featuring a quaint three-bedroom, one-bathroom home on a snug foundation, it provides an ideal canvas for your personal touch. The property emanates character and history, complemented by a charming outdoor space.

The generously sized bedrooms make this residence ideal for a couple or a young family seeking a comfortable living space. Situated in a tranquil locale, it offers the breathing room necessary for creativity to thrive. What distinguishes this property is its untapped potential a pristine canvas

Type : House
Price : \$ 640,000
View : <https://www.butterfieldproperty.com.au/sale/nsw/ar-south-coast/bega/residential/house/8150947>



Roy Van Casteren
02 6492 5155



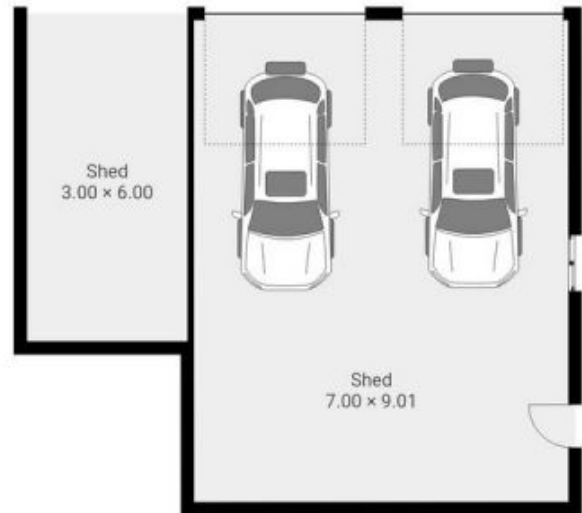
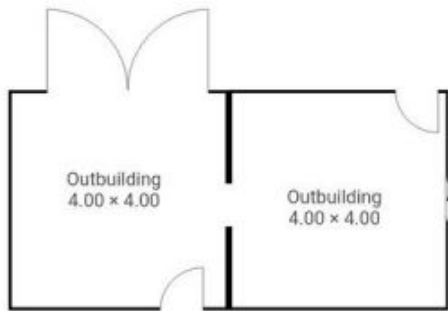
Elvi Di Donato
02 6492 5155

[For full version visit the website](https://www.butterfieldproperty.com.au)



This plan is intended for marketing purposes only. All measurements are approximations.





This plan is intended for marketing purposes only. All measurements are approximations.

