



19 Koorungal Place Bega NSW

4  2  4 

This spacious family home located in a quiet cul-de-sac with great valley views, is just waiting for someone with a fresh perspective to bring it back to its full potential. A solid brick dwelling located close to town and ideal for an active lifestyle with the local playing fields and walking tracks just a few steps away.

There are four bedrooms throughout the home, 2 of the bedrooms are downstairs with a separate living area and bathroom, ideal for visitors, teenager's retreat or even some extra rental income. Enjoy the sun drenched garden with loads of space for entertaining, complete with double lockup garage.

Other features include:

[For full version visit the website](https://www.butterfieldproperty.com.au/sale/nsw/far-south-coast/bega/residential/house/8150888)

Type : House
Price : \$ 580,000
Building Size : 150 sqm
Land Size : 880 sqm
View : <https://www.butterfieldproperty.com.au/sale/nsw/far-south-coast/bega/residential/house/8150888>



Roy Van Casteren
0422 772 064

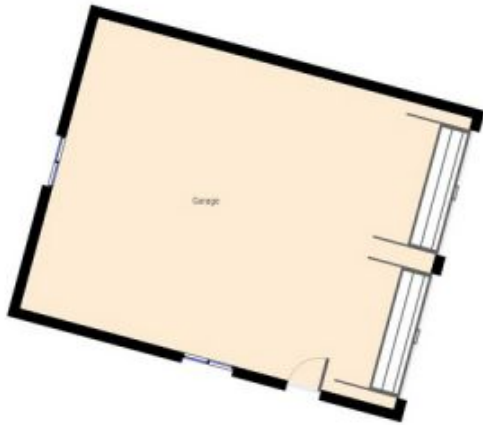


Elvi Di Donato
0427 052 002



This plan is intended for marketing purposes only. All measurements are approximations.





This plan is intended for marketing purposes only. All measurements are approximations.

