






6 Curlew Close Mirador NSW

4  3  4 

With sweeping 180 degree views this contemporary home has a spacious open plan design with features that will impress. There is potential to stamp your mark on this substantially sized property which offers two living areas over 2 levels. Modern and inviting, the house is filled with quality fixtures and displays the style you would expect from a residence of this class.

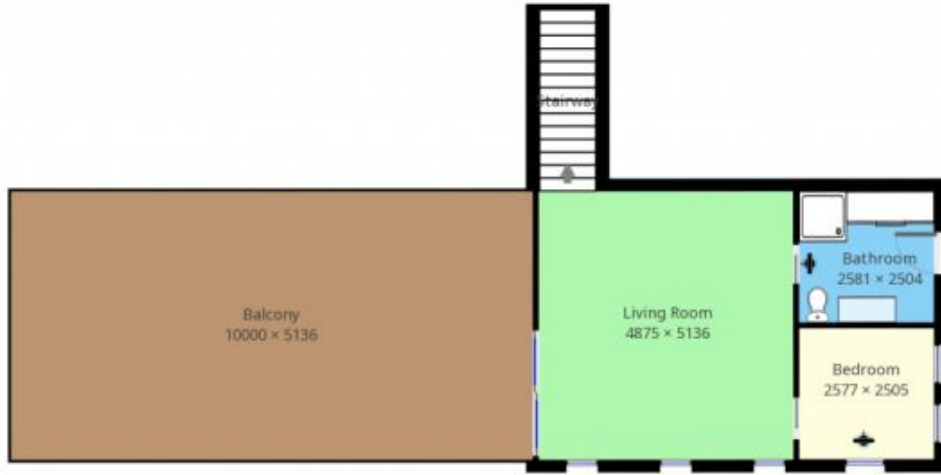
The house is positioned in an elevated spot situated in a peaceful and prestigious Mirador cul de sac. As you enter the home, you will be automatically drawn to the magnificent panoramic ocean views incorporating Merimbula's Main Beach right through to Pambula Beach and Green Cape. Mt Imlay and escarpment majesty rise to the south west for beautiful sunsets. The sparkling evening

Type : House
Land Size : 841 sqm
View : <https://www.butterfieldproperty.com.au/sale/nsw/eurobodalla-coast/mirador/residential/house/8150807>



Elvi Di Donato
 0427 953 002

[For full version visit the website](https://www.butterfieldproperty.com.au)



This plan is intended for marketing purposes only. All measurements are approximations.



This plan is intended for marketing purposes only. All measurements are approximations.