



**88 Grey Myrtle Lane Myrtle Mountain NSW**

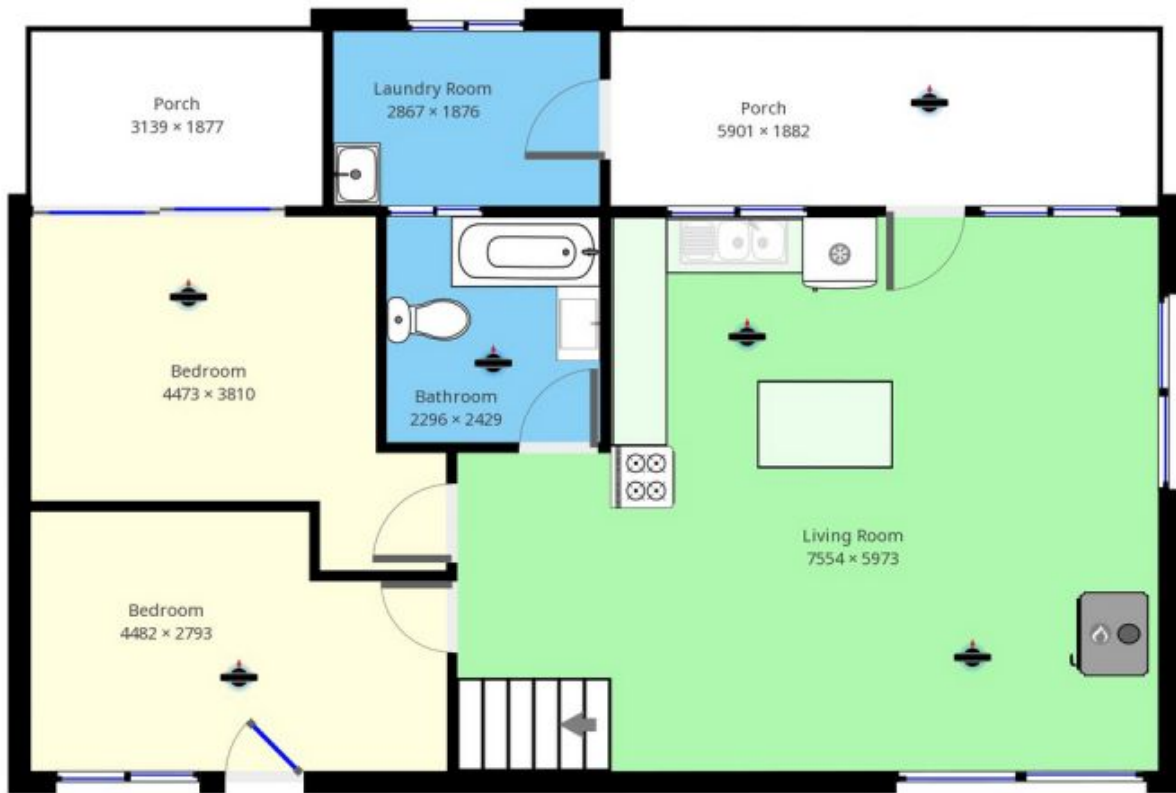
3  1 

Off the grid living is made easy with enchanting ambience and privacy this property really is a place of peace where nature is your neighbour. Ample rain water storage and a gravity fed dam service the fully insulated three bedroom home and irrigate the netted orchard and vegetable garden. Approx. 10 mins to Candelo, 30 mins to Bega and 35 mins to gorgeous south coast beaches.

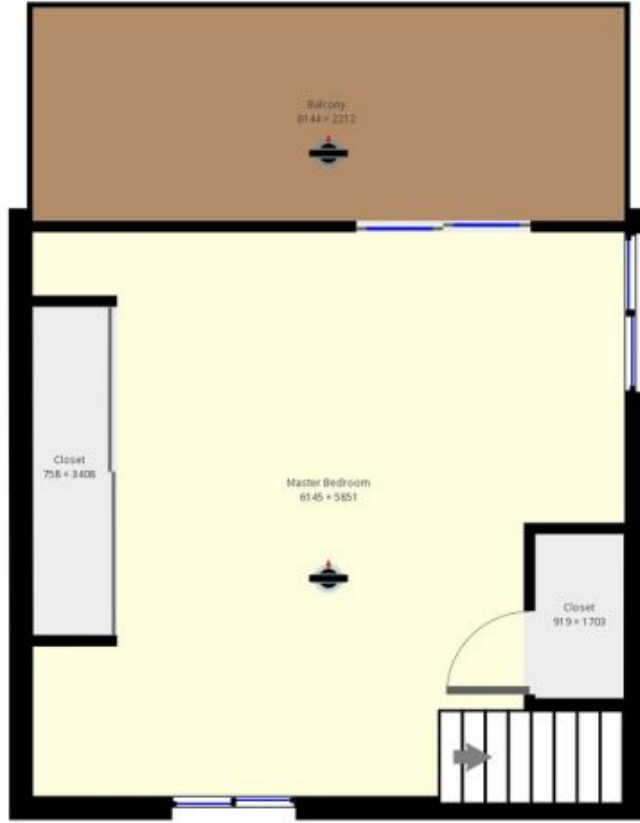
**Type** : Acreage/Semi-Rural  
**Price** : \$ 430,000  
**Land Size** : 809371 sqm  
**View** : <https://www.butterfieldproperty.com.au/sale/nsw/far-south-coast/myrtle-mountain/residential/acreagesemirural/8150788>

- Three bedroom one bathroom fully insulated off the grid home
- Low energy appliances - washing and refrigeration
- Twelve solar panels 2.4 KVA with battery storage
- Gas cooking and gas hot water service
- Slow combustion wood heating
- Ride on mower - Honda generator - 20 foot container

[For full version visit the website](https://www.butterfieldproperty.com.au)



This plan is intended for marketing purposes only. All measurements are approximations.



This plan is intended for marketing purposes only. All measurements are approximations.