






4B Guboo Place Bermagui NSW

3  2  6 

Think of this Appalachian design solid log timber home, with three bedrooms, two bathrooms and a 10 x 9 metre three bay colour bond shed, on a 936m2 block, tucked away in a quiet cul-de-sac in beautiful Bermagui as a dream come true, if you will. However the time to stop dreaming to take decisive action would be now, lest another snatches this rare beauty from your grasp.

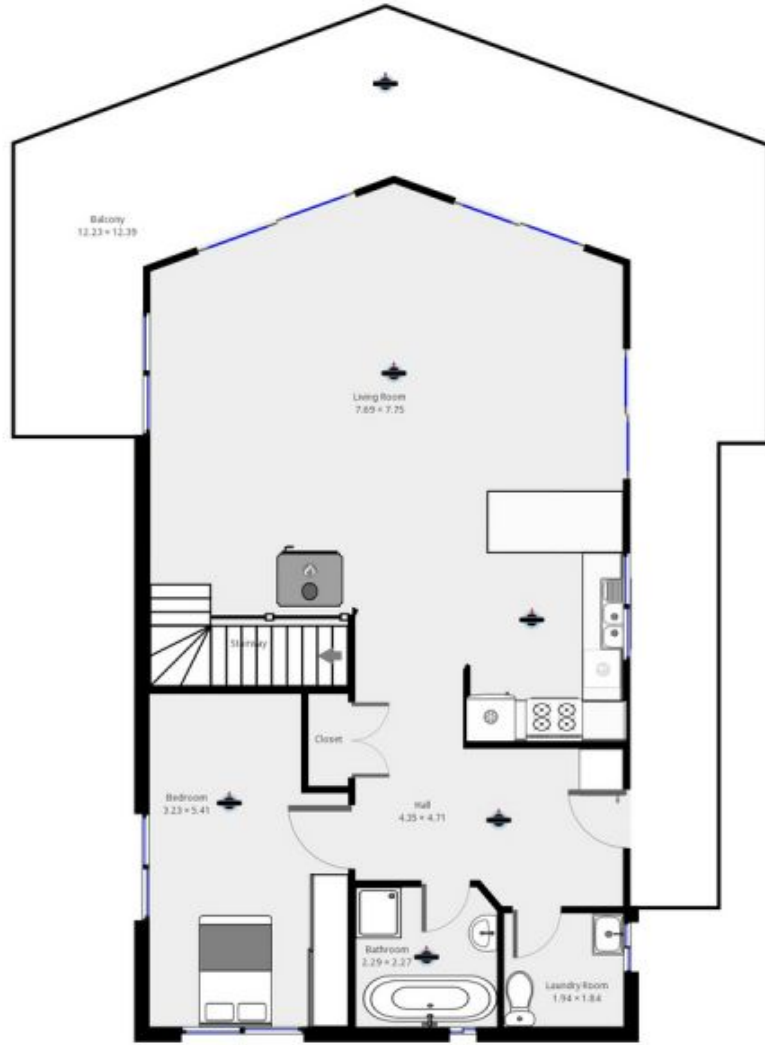
Type : House
Price : \$ 650,000
View : <https://www.butterfieldproperty.com.au/sale/nsw/eurobodalla-coast/bermagui/residential/house/8150746>

- Solid timber two storey cathedral ceiling home
- Three good sized bedrooms & two bathrooms
- Spacious open plan gas appliance kitchen
- Solid hardwood river gum kitchen bench tops
- Grand staircase and mezzanine office space
- Separate under house studio or workshop
- Wrap around verandah overlooking lovely gardens

[For full version visit the website](https://www.butterfieldproperty.com.au)



This plan is intended for marketing purposes only. All measurements are approximations.



This plan is intended for marketing purposes only. All measurements are approximations.