

443 Kameruka Lane Toothdale NSW

4  4  4 

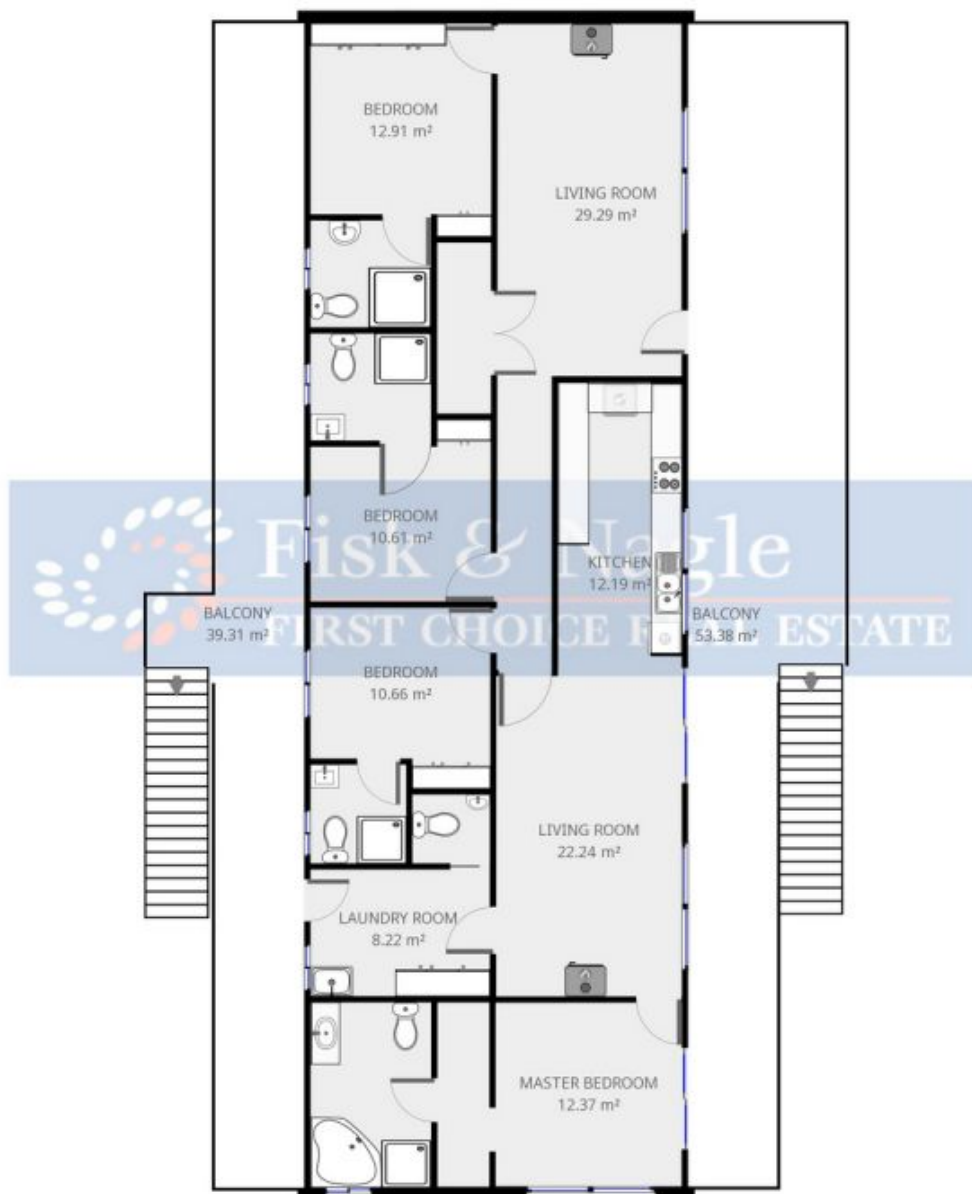
This generously proportioned cottage on 5 acres features four bedrooms, all with built in robes and their own ensuites including one for disabled use. With a commercial grade kitchen, two separate living areas and extra accommodation separate to the main house, two double garages, a workshop, approx. 180,000 litres of rain water tanks, good fencing and a great chook pen. This property is a fantastic find. Dont let this opportunity pass you by.

Type : House
Land Size : 20234.3 sqm
View : <https://www.butterfieldproperty.com.au/sale/nsw/far-south-coast/toothdale/residential/house/8150669>

Very well presented four bedroom four bathroom home
 Spacious commercial grade kitchen
 Open plan living and two separate living areas
 Extra self contained accommodation
 Two separate double garages
 Fourteen panel back to the grid solar system

[For full version visit the website](https://www.butterfieldproperty.com.au)

<https://www.butterfieldproperty.com.au>



Disclaimer: Please note this floor plan is for marketing purposes and is to be used as a guide to the layout of the property.