



559 Warrigal Range Road Brogo NSW

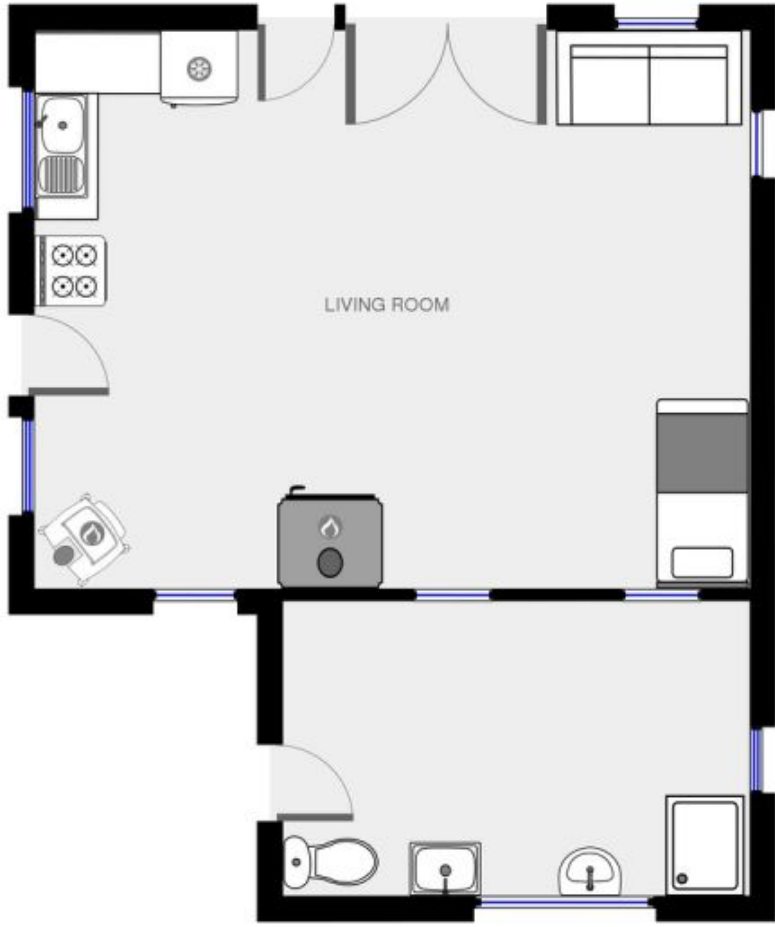
1  1 

Cosy and well constructed open plan Mud brick Cottage on 2.6 hectares with sealed road frontage. Permanent live in or great weekender and all council approved. Plenty of room to extend, both internally and externally. Make it your escape to the country.

Type : House
Price : \$ 249,000
Land Size : 26000 sqm
View : <https://www.butterfieldproperty.com.au/sale/nsw/far-south-coast/brogo/residential/house/8150481>

Cosy Mud brick Cottage
 Log fire heating with hot water jacket
 Fully fenced
 Almost 7 acres
 Spring fed dam
 Tank water
 Veggie Patch
 Sealed road frontage
 Only 20 minutes to Bega CBD

[For full version visit the website](https://www.butterfieldproperty.com.au)



Disclaimer: Please note this floor plan is for marketing purposes and is to be used as a guide only.