



9 Moorhead Street Bermagui NSW

3  1  1 

Located in one of most desirable streets in Bermagui, overlooking town and directly across the road from Spooner Park this attractive coastal home is ripe for improvement. Set on a mostly flat and low maintenance 608m² block, providing the perfect foundation to create your forever home.

Land Size : 608 sqm
View : <https://www.butterfieldproperty.com.au/sale/nsw/eurobodalla-coast/bermagui/residential/house/7462984>

With 3 bedrooms, large bathroom with bath and separate shower, spacious eat-in kitchen, sunny living room and enclosed sun room there is plenty of space and amenity for the whole family. Other features include hardwood floors, slow combustion heater and views over town to the harbour. There is also potential for amazing panoramic views of the coast from a second level if you decided to develop or extend upwards.

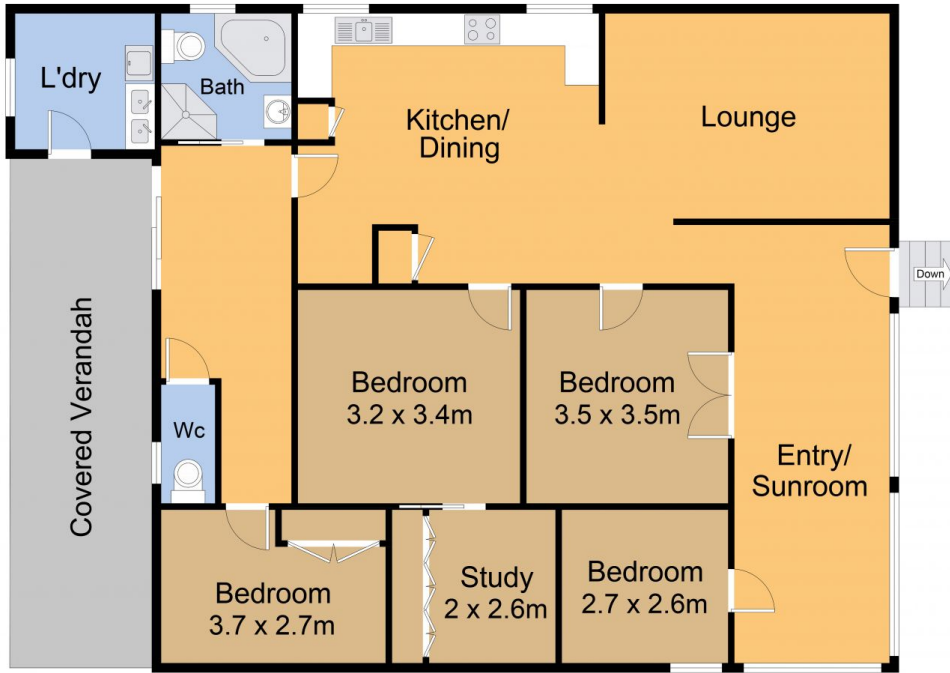


Mick Butterfield
(02) 6493 3444



Melisa Ashton
(02) 6493 3444

Representing an opportunity to secure an appealing



9 Moorehead Street, Bermagui



Plan is not to scale. Measurements are approximate and should be used as a guide only.