






### 5/7 Wattle Street Bermagui NSW

3  2  2 

Located in the highly desirable 'Seascape' complex, just a short stroll to Bermagui River, this spacious 3 bedroom townhouse is one not to be missed. North facing with a practical floorplan offering easy living, the property presents an outstanding opportunity for downsizers or families for permanent or holiday living.

**Type** : Townhouse

**Price** : \$ 825,000

**View** : <https://www.butterfieldproperty.com.au/sale/nsw/eurobodalla-coast/bermagui/residential/townhouse/7306811>

Centrally positioned in a sought-after location, features include -

- ? 3 bedrooms on the first floor - main with ensuite and views to Gulaga (extra large 3rd bedroom could double as rumpus/office/hobby room)

- ? Combined living & dining on the ground floor opening to a North facing deck, fenced courtyard with established garden

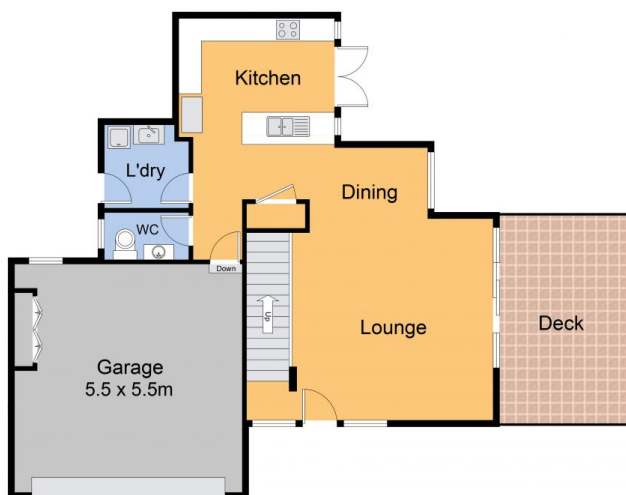
[For full version visit the website](https://www.butterfieldproperty.com.au)



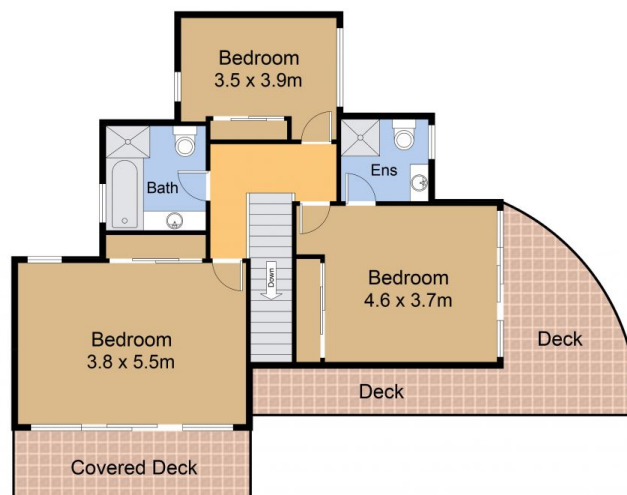
**Melisa Ashton**  
(02) 6493 3444



**Mick Butterfield**  
(02) 6493 3444



Lower Level



Upper Level



5/7 Wattle Street, Bermagui



*Plan is not to scale. Measurements are approximate and should be used as a guide only.*