



## 6 Young Street Bermagui NSW

2  1  3 

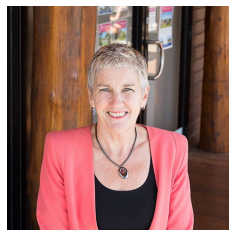
In our opinion, this property has the best verandah views in the world!! 700+ m2 of land with charming 1930's cottage and large shed with front and rear laneway access. In one of the most sought after positions in Bermagui. Zoned R3 medium density, ideal for re-development or renovate the cottage and build another home with access from the rear.

Light and comfortable, the property comprises 2 bedrooms with extra living rooms/sunrooms, large covered verandah and easy level access to rear garden. Huge boat/caravan shed with access from rear laneway and large, sunny, fenced rear garden.

Stunning panoramic views of Bermagui Bay and Gulaga Mountain and only a short walk to Horseshoe Bay Beach

[For full version visit the website](https://www.butterfieldproperty.com.au)

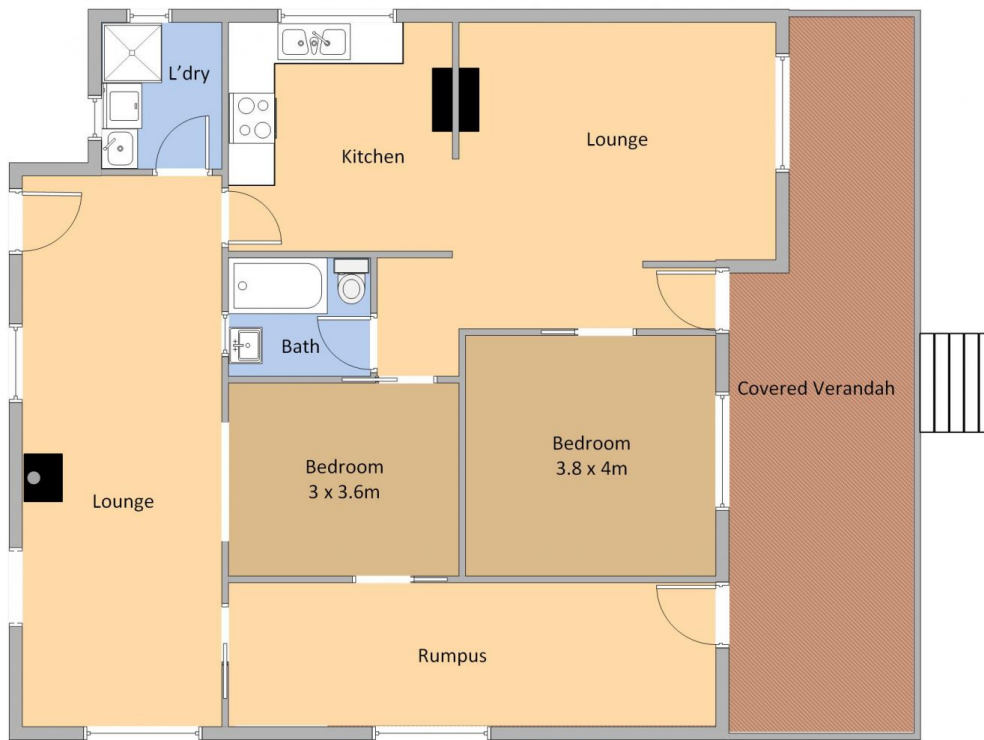
**Type** : House  
**Land Size** : 703 sqm  
**View** : <https://www.butterfieldproperty.com.au/sale/nsw/eurobodalla-coast/bermagui/residential/house/6587019>



**Julie Rutherford**  
02 6493 3444



**Mick Butterfield**  
(02) 6493 3444



6 Young St, Bermagui

Plan is not to scale.  
Measurements are  
approximate and should be  
used as a guide only.