

## 15 Flower Circuit Akolele NSW

4  2  4 

Situated in a private and peaceful setting, overlooking the stunning Wallaga Lake, this well-built brick home is ready for its new owner to enjoy from day one.

With commanding view of the lake and direct access to its foreshore this beautiful home has something for everyone.

Features include:

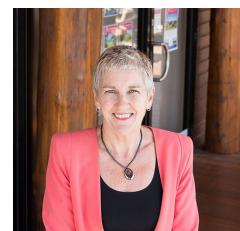
- ? 4 Large bedrooms with robes plus an additional study area.
- ? 2 Good sized bathrooms.
- ? A bright and modern kitchen with quality appliances.
- ? Open plan living area opening onto large decks front and back.
- ? Plenty of storage and a wine cellar under the house.

[For full version visit the website](https://www.butterfieldproperty.com.au)

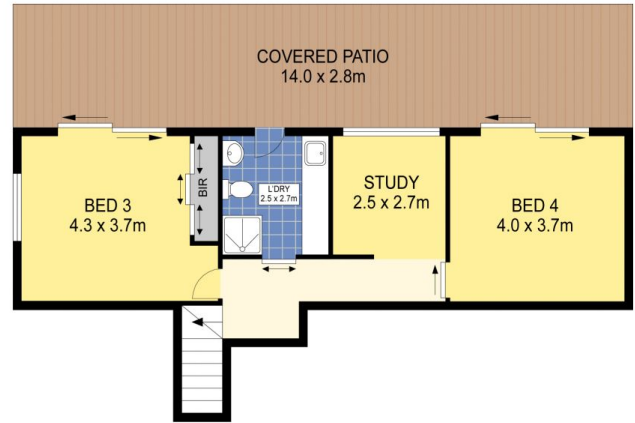
**Type** : House  
**Price** : \$ 800,000  
**Land Size** : 645 sqm  
**View** : <https://www.butterfieldproperty.com.au/sale/nsw/eurobodalla-coast/akolele/residential/house/5668607>



**Mick Butterfield**  
(02) 6493 3444



**Julie Rutherford**  
02 6493 3444



PLANS SHOWN ONLY INDICATIVE OF LAYOUT. DIMENSIONS ARE APPROXIMATE.

INT : 148m<sup>2</sup>  
EXT : 101m<sup>2</sup>



# 15 Flower Circuit, Akolele